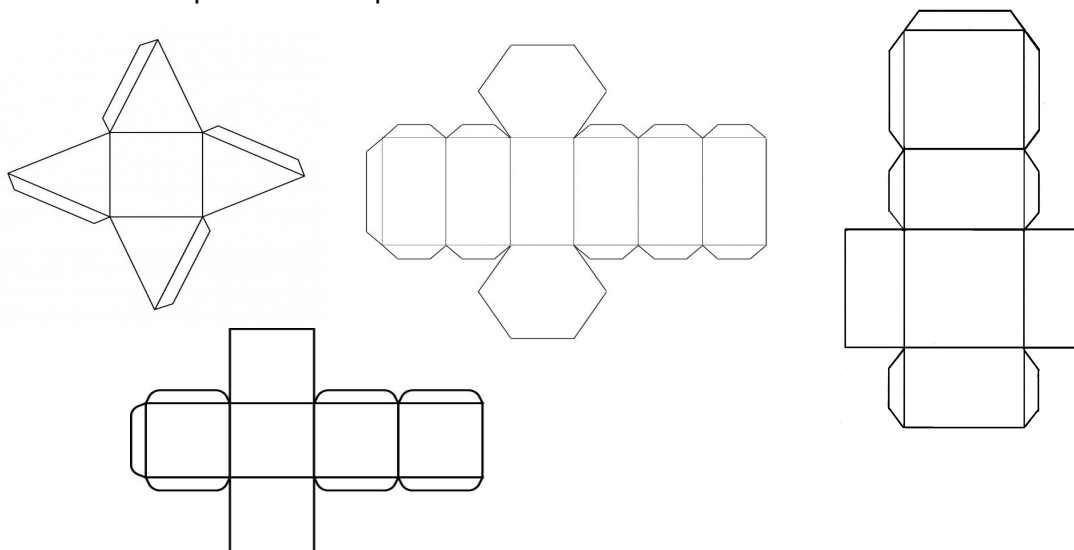






Observe os poliedros a seguir: Monte-os e determine a quantidade de faces, vértices e arestas que os compõem. Na sequência, complete a tabela verificando os casos em que eles se aplicam:



Poliedros	Figura montada	Faces	vértices	Arestas	Relação
Pirâmide de base quadrada		5		8	
		6	8		$F + V - 2 = A$
			12	18	$A - V + 2 = F$
Paralelepípedo					

## Moldes para montar

