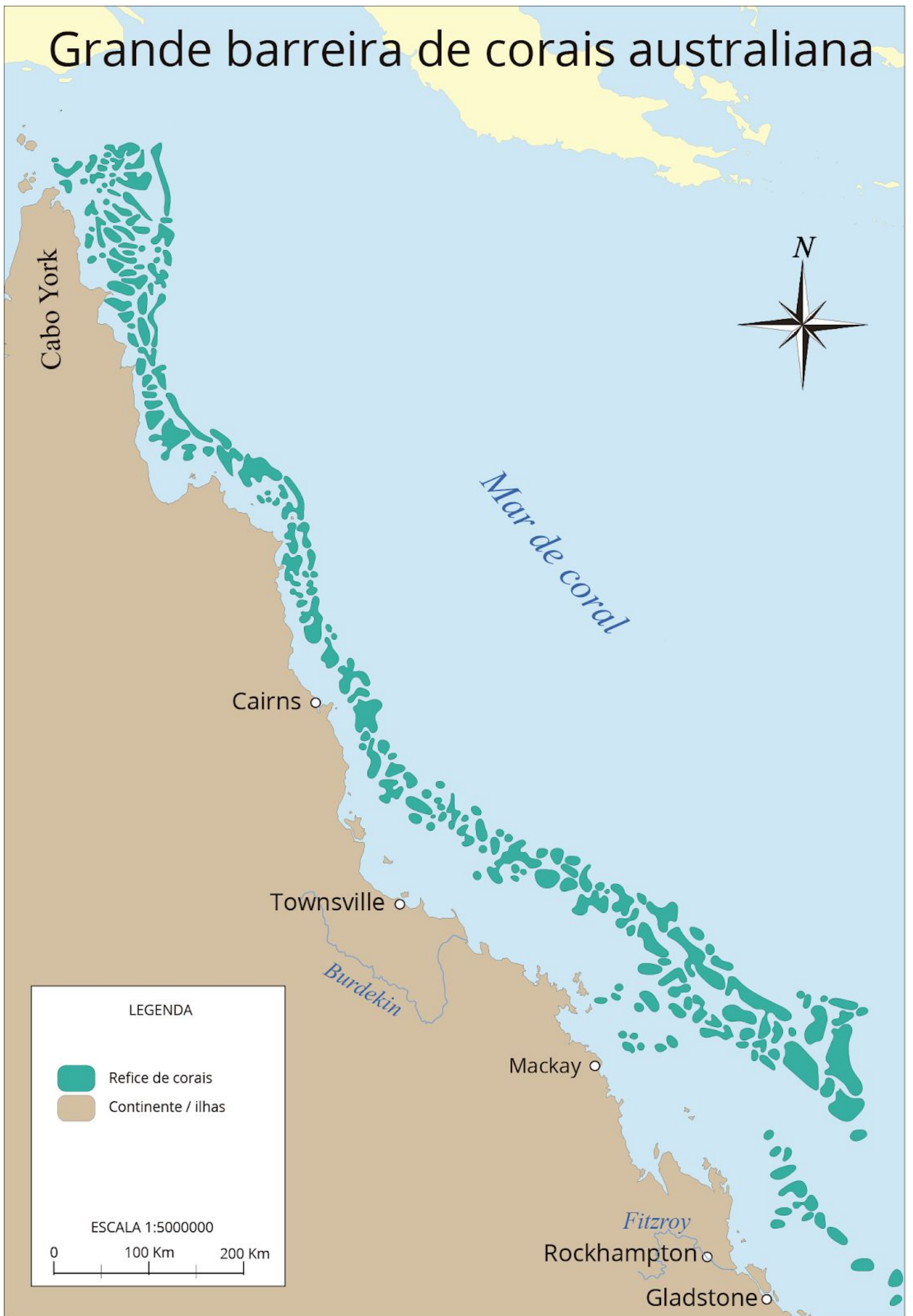


Grande barreira de corais australiana



Cabo York



Mar de coral

Cairns ○

Townsville ○

Burdekin



Mackay ○

Fitzroy

Rockhampton ○

Gladstone ○

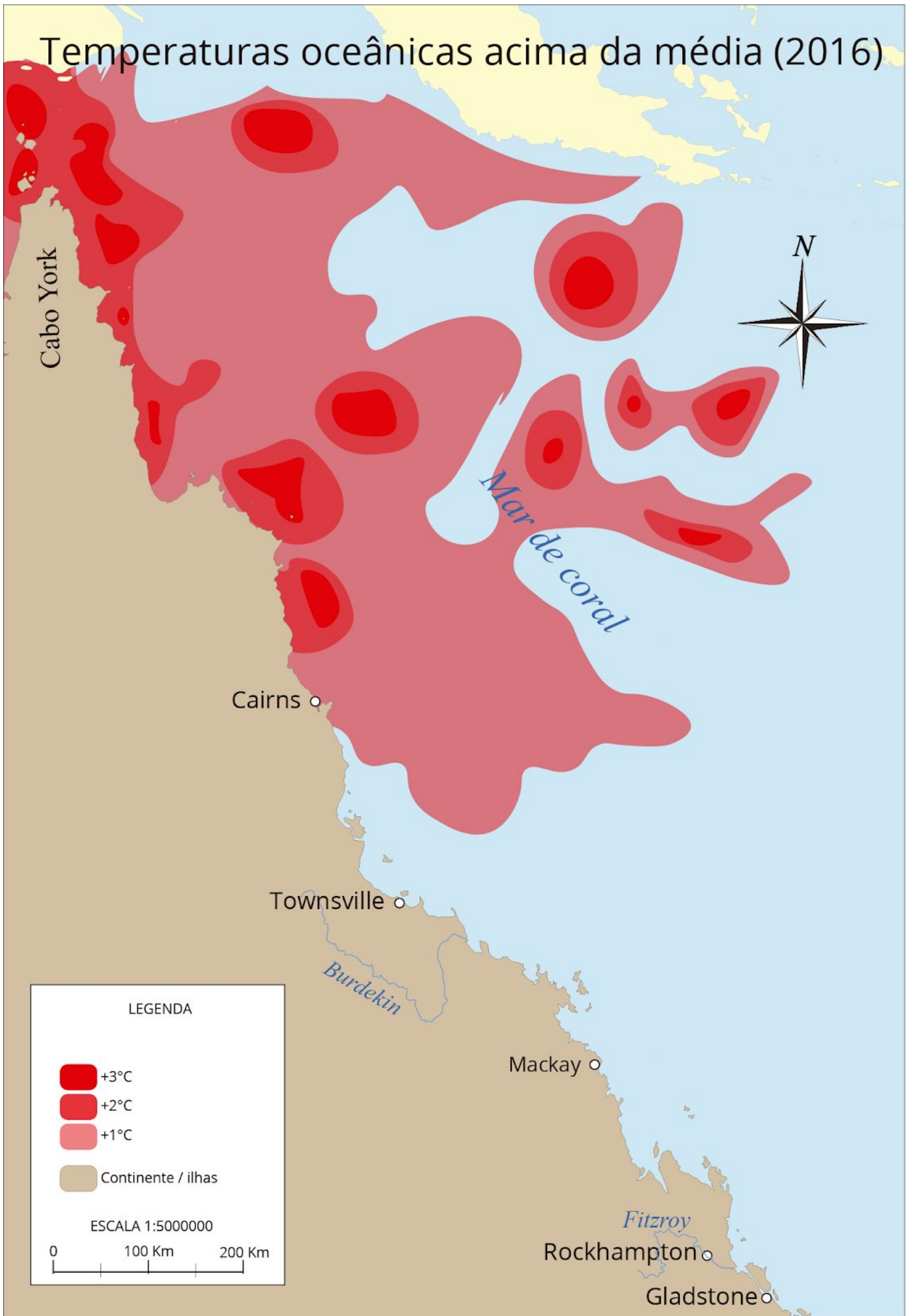
LEGENDA

-  Refice de corais
-  Continente / ilhas

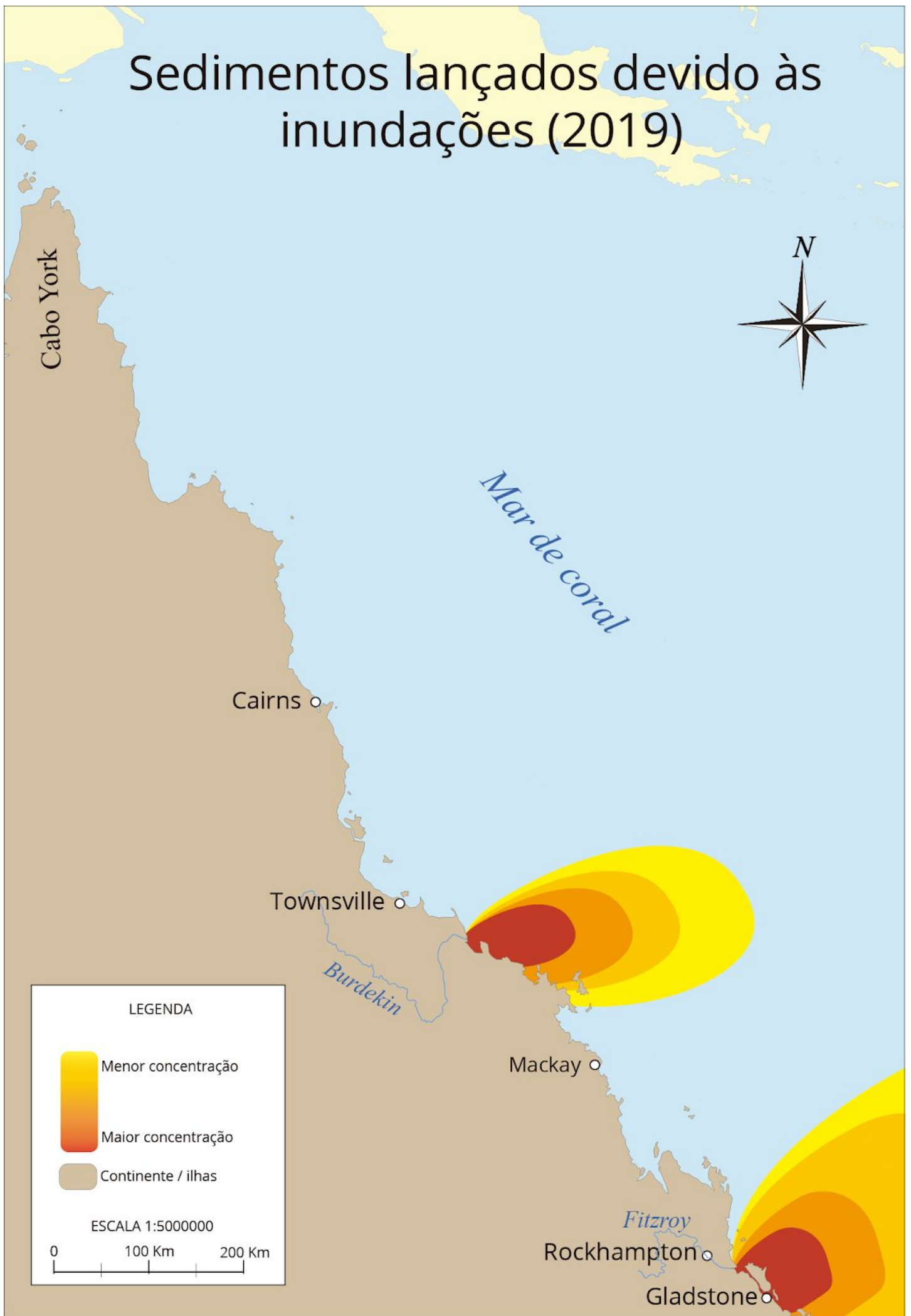
ESCALA 1:5000000

0 100 Km 200 Km

Temperaturas oceânicas acima da média (2016)



Sedimentos lançados devido às inundações (2019)



Corais mortos (2016)

