

CONTEXTUALIZAÇÃO

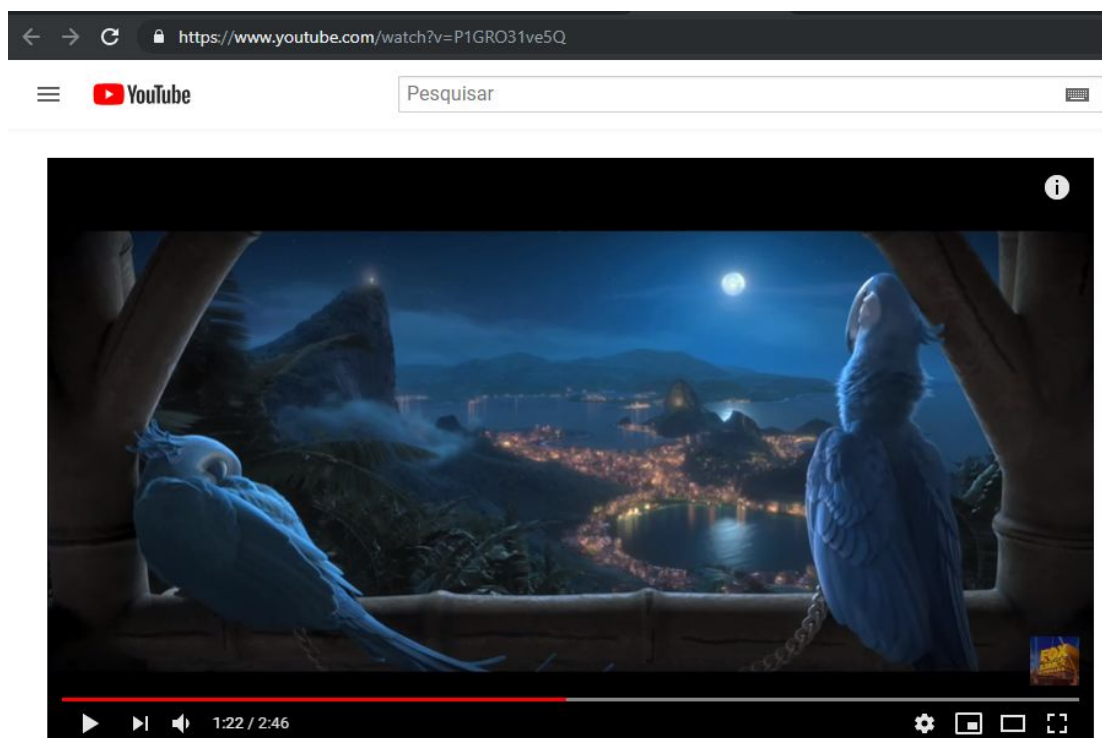


Fonte: **A Amazónia aproxima-se perigosamente de um ponto de "não retorno"**. Diário de Notícias, 22 fev. 2018. Disponível em:

<<https://www.dn.pt/sociedade/interior/floresta-da-amazonia-aproxima-se-perigosamente-de-um-ponto-de-nao-retorno-onu-9136012.html>>. Acesso em: 18 jan. 2019.



HODGKINSON, Mike. **Testing the turquoise waters of paradise**. The Guardian. 10 de setembro de 2008. Disponível em: <<https://www.theguardian.com/travel/2008/sep/10/brazil.wildlifeholidays>>. Acesso em: 18 jan. 2019.




Rio - Official Trailer | HQ

Fonte: **Rio - Official Trailer | HQ**. 2010 (2min46s). Disponível em: <<https://www.youtube.com/watch?v=P1GRO31ve5Q>>. Acesso em: 18 jan. 2019.

PROBLEMATIZAÇÃO



Fonte: RUGENDAS, Johann Moritz (1830). Paisagem na selva tropical brasileira. *Enciclopédia Itaú Cultural*. Disponível em: <<http://enciclopedia.itaucultural.org.br/obra2988/paisagem-na-selva-tropical-brasileira>>. Acesso em: 18 jan. 2019



Brazil
Country in South America

Brazil, a vast South American country, stretches from the Amazon Basin in the north to vineyards and massive Iguazu Falls in the south. Rio de Janeiro, symbolized by its 38m Christ the Redeemer statue atop Mount Corcovado, is famed for its busy Copacabana and Ipanema beaches as well as its enormous, raucous Carnival festival, featuring parade floats, flamboyant costumes, and samba music and dance.

Population: 209.3 million (2017) Trending, World Bank
Capital: Brasília
Dialing code: +55
President: Jair Bolsonaro
Currency: Brazilian real
Official language: Portuguese

Fonte: **Brazil**. Disponível em: <https://www.google.com/search?source=hp&ei=BnFDXLzHL46n5OUPismJoAQ&q=brazil&btnK=Google+Search&og=brazil&gs_l=psy-ab..3..0l10.1185.3356..3784..0.0.0.150.671.2j4.....0..1_gws-wiz.....0.QoIWx-gkFk>. Acesso em 18 jan. 2019.